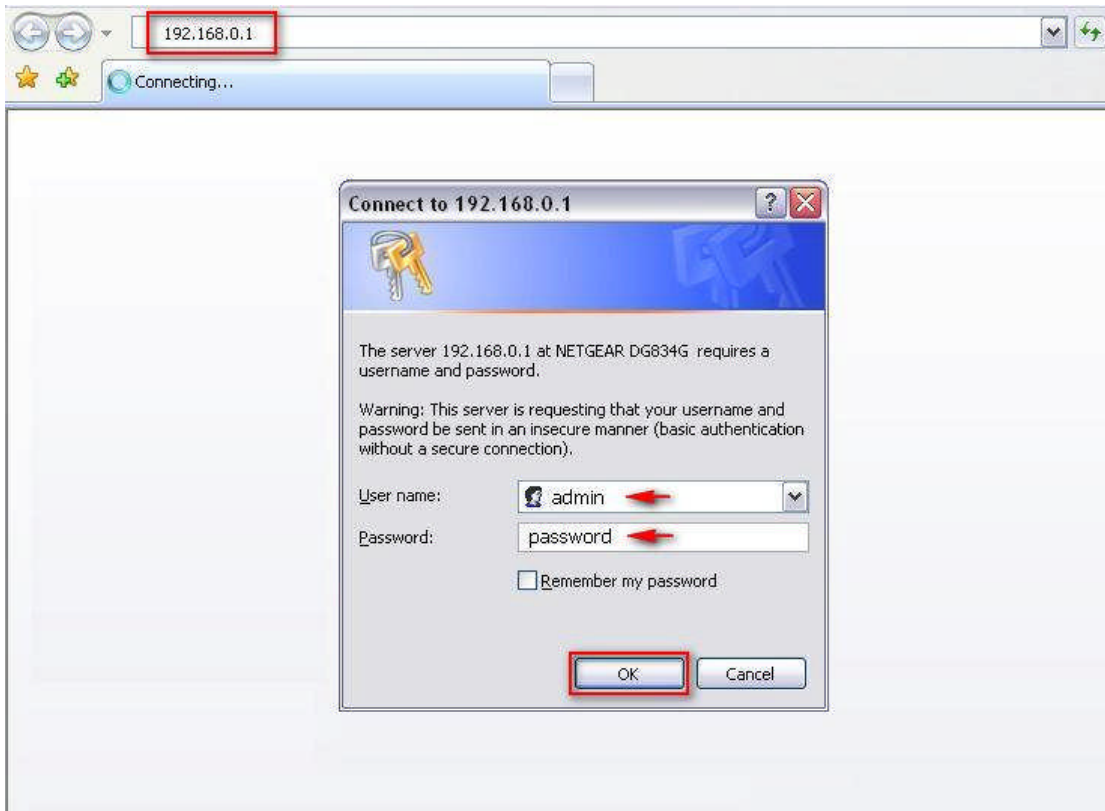
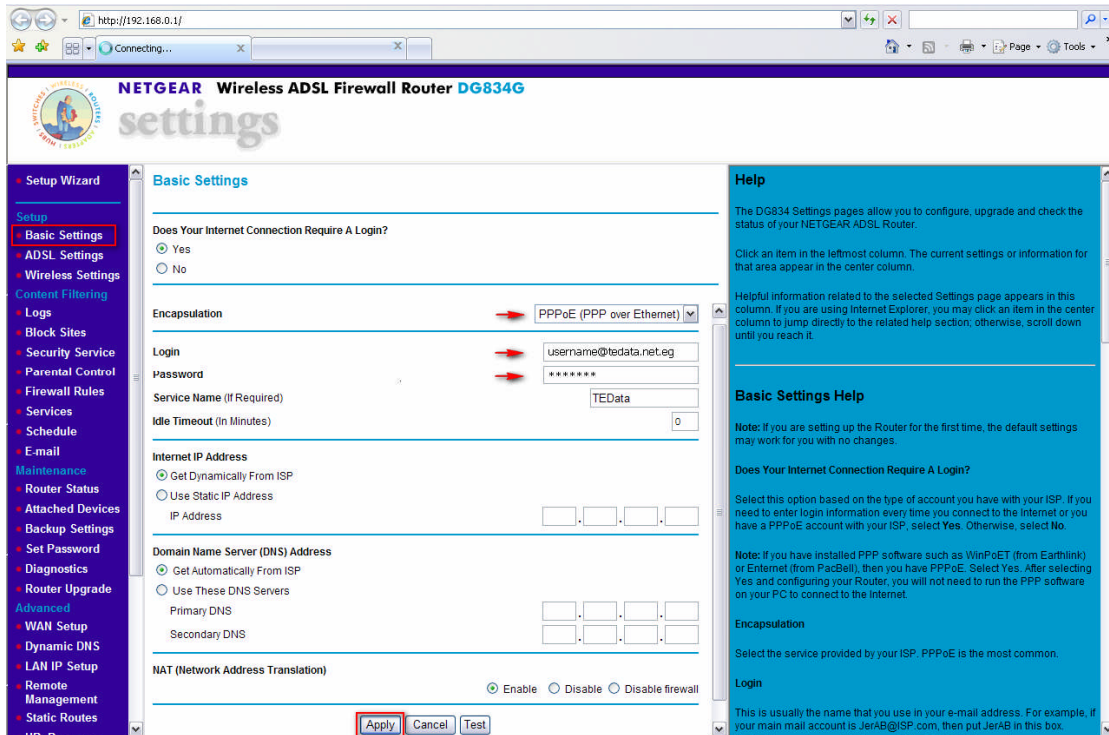


## How to setup NetGear Router [Dynamic Configuration]



- Login into the router with **192.168.0.1**.
- The User name: **admin**.
- The Password: **password**.



- Click **Basic Settings**.
- And select **Encapsulation: PPPoE**.
- And write the **Username** and **Password as Shown above**.
- And then Select **NAT: Enable**.
- And Click **Apply**.

- Click **ADSL Settings**.
- And select **Multiplexing Method: LLC**.
- And then **VPI: 0 VCI: 35**.
- And Click **Apply** to finish the configuration.

**TE Data**

:: Copyright © 2007 . TE Data Support Team . All Rights Reserved ::

:: For Further Informations Call Us At 19777 ::

